



# WELCOME TO BUTTERFIELD RESIDENTIAL CARE CENTER

**Butterfield Residential Care Center (BRCC) is an attractive, worry free residential care center designed to maintain your independence, located near Citizens Memorial Hospital and beautiful Dunnegan Memorial Park.**

Each apartment is tastefully decorated and designed for functional, convenient use. Units include one to two bedrooms with private bath, living room and kitchenette. Basic furnishings are provided upon request at no additional charge or you may bring your personal furnishings and accessories from home. Call lights are included in each room for immediate assistance.

BRCC offers you the best of both worlds, your independence within our loving care. Live, laugh, love at Butterfield.

For more information and to schedule a tour today, call 417-328-6380. Butterfield Residential Care Center is a Citizens Memorial Health Care Foundation residential care center, and is located at 1120 N. Butterfield Road, in Bolivar.

## **Apartment Pricing** - (as of Oct. 1, 2024)

Studio Apartment: \$2,400 (single occupancy)

Standard One Bedroom Apartment: \$3,015 (single occupancy)

Large One Bedroom Apartment: \$3,125 (single occupancy)

One Bedroom Deluxe Apartment: \$3,300 (single occupancy) or \$4,795 (double occupancy)

Two Bedroom Apartment: \$3,745 (single occupancy) or \$5,245 (double occupancy)

## **Included Amenities**

- Beauty shop
- Daily planned activities and outings
- Exercise equipment
- Fire alarm and sprinkler system
- Generator
- Housekeeping
- Lab services performed on site
- Lawn care
- Library
- Linens and laundry service
- Maintenance
- Medication management
- Outpatient therapy
- Parking spaces
- Personal patio with each apartment
- Restaurant-style dining
- Security services
- Shower assistance
- Thermostat in each apartment
- TV hook-ups with satellite
- Utilities
- WiFi

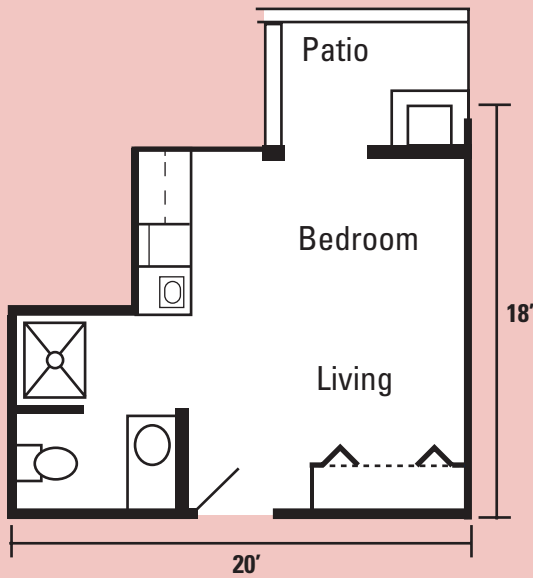
Floor Plans, Side 2 ➡

## **MORE INFORMATION**

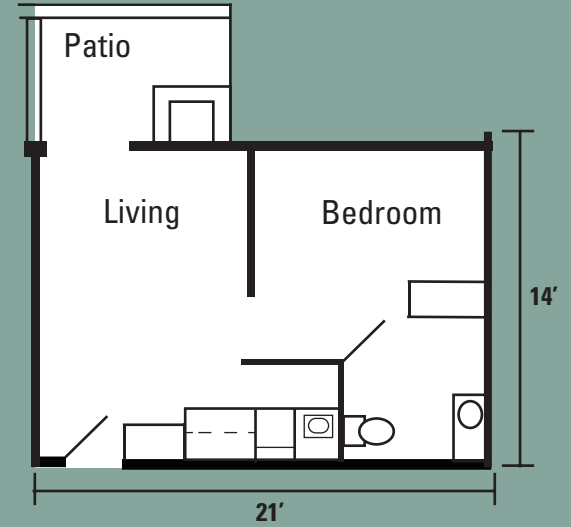
417-328-6380 | [citizensmemorial.com](http://citizensmemorial.com)



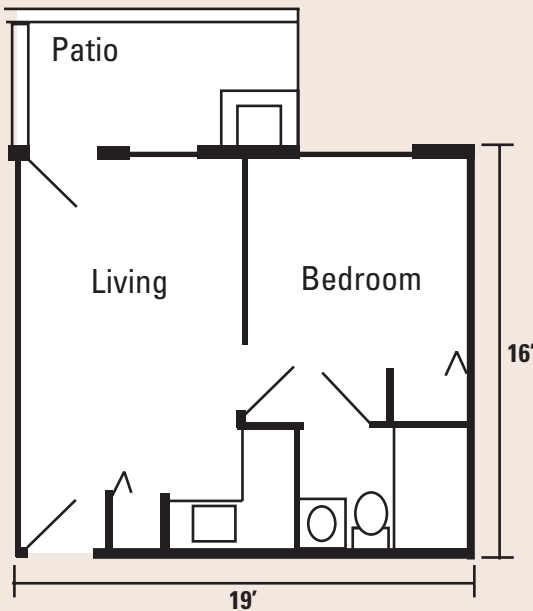
## Studio Apartment 294 sq. ft.



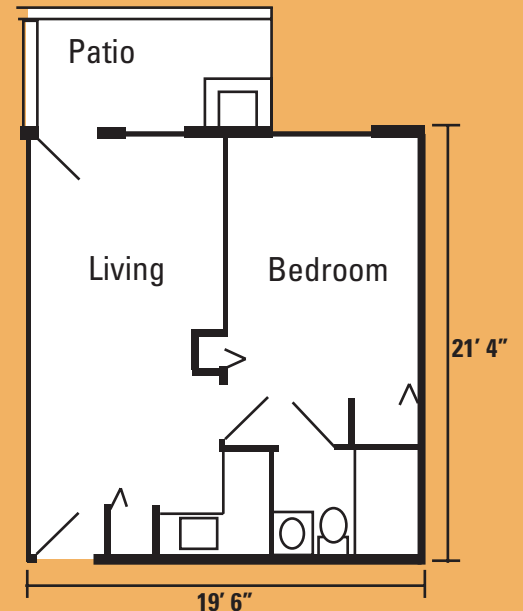
## Standard One Bedroom 304 sq. ft.



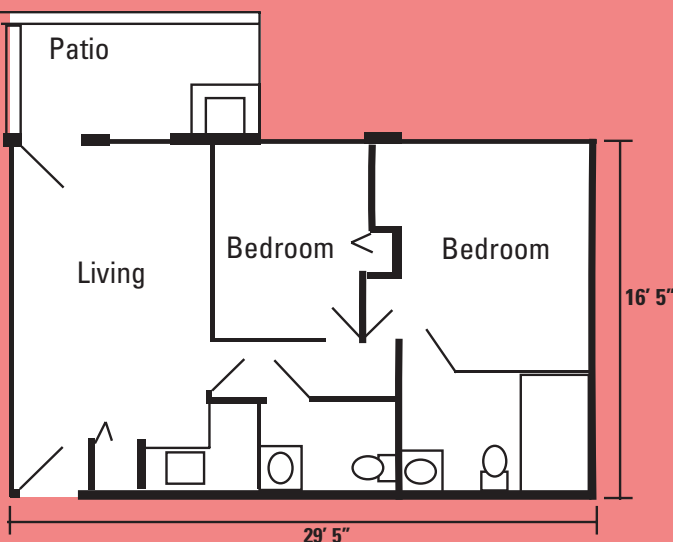
## Large Single Bedroom 360 sq. ft.



## One Bedroom Deluxe 400 sq. ft.



## Two Bedroom 486 sq. ft.



Butterfield Residential Care Center received the Silver — Commitment to Quality Award in 2023.

The American Health Care Association and National Center for Assisted Living give the award for meeting quality and service standards.

CMH Foundation residential care and long-term care facilities are committed to providing quality care to all residents. For more information, go to [citizensmemorial.com](http://citizensmemorial.com).